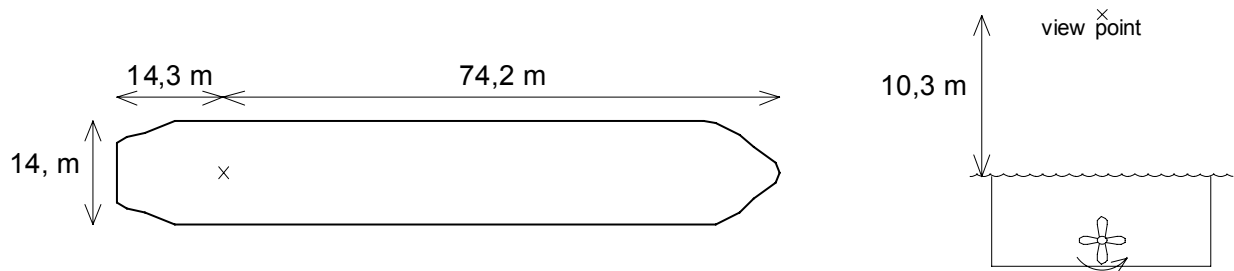


PILOT CARD BULKC11L

Ship's name	Arklow River	Date	
Call Sign	Deadweight	4 504 tonnes	Year built
Draught aft	5,7 m 18 ft 9 in	Forward	5,7 m 18 ft 6 in
		Displacement	5 906, tonnes

SHIP'S PARTICULARS

Length overall	89,99 m	Anchor chain: Port	8, shackles	Starboard	8, shackles
Breadth	14, m	Stern	N/A shackles		
Bulbous bow	(yes/no)	(1 shackle = 27,4 m = 15 fathoms)			



Type of engine	diesel	Maximum power		1 499 kW	2 039 hp
Manoeuvring engine order	RPM	Pitch	Speed (knots)		
			Loaded	Ballast	
Full sea speed	194,8	0,835	12,0		
Full ahead	194,8	0,735	10,6		
Half ahead	194,8	0,585	9,0		
Slow ahead	194,8	0,334	5,0		
Dead slow ahead	194,8	0,167	2,0		
Dead slow astern	-0,3	-0,040	Time limit astern _____ min:sec		
Slow astern	-0,2	-0,080	Full ahead to full astern 00:30 min:sec		
Half astern	-0,1	-0,158	Max. No. of consecutive starts ∞		
Full astern	0,0	-0,820	Minimum RPM _____ knots		
			Astern power _____ % ahead		

STEERING PARTICULARS

Type of rudder becker

Maximum angle 45, deg

Hard-over to hard-over 30, s

Rudder angle for neutral effect 0 deg

Thruster: Bow 250 kW 1,006 hp
 N/A kW N/A hp
 N/A kW N/A hp

Stern N/A kW N/A hp
 N/A kW N/A hp
 N/A kW N/A hp

CHECKED IF ABOARD AND READY

Anchors
 Whistle
 Radar 3 cm 10 cm
 ARPA
 Speed log Doppler: Yes/No
 Water speed
 Ground speed
 Dual-axis
 Engine telegraphs
 Steering gear
 Number of power units operations

Indicators:
 Rudder
 Rpm/pitch
 Rate of turn
 Compass system
 Constant gyro error ± deg
 VHF
 Elec. pos. fix. system
 Type _____

OTHER INFORMATION: